

## Power System



**Skin Graft Mesher**  
For Skin Transplantation

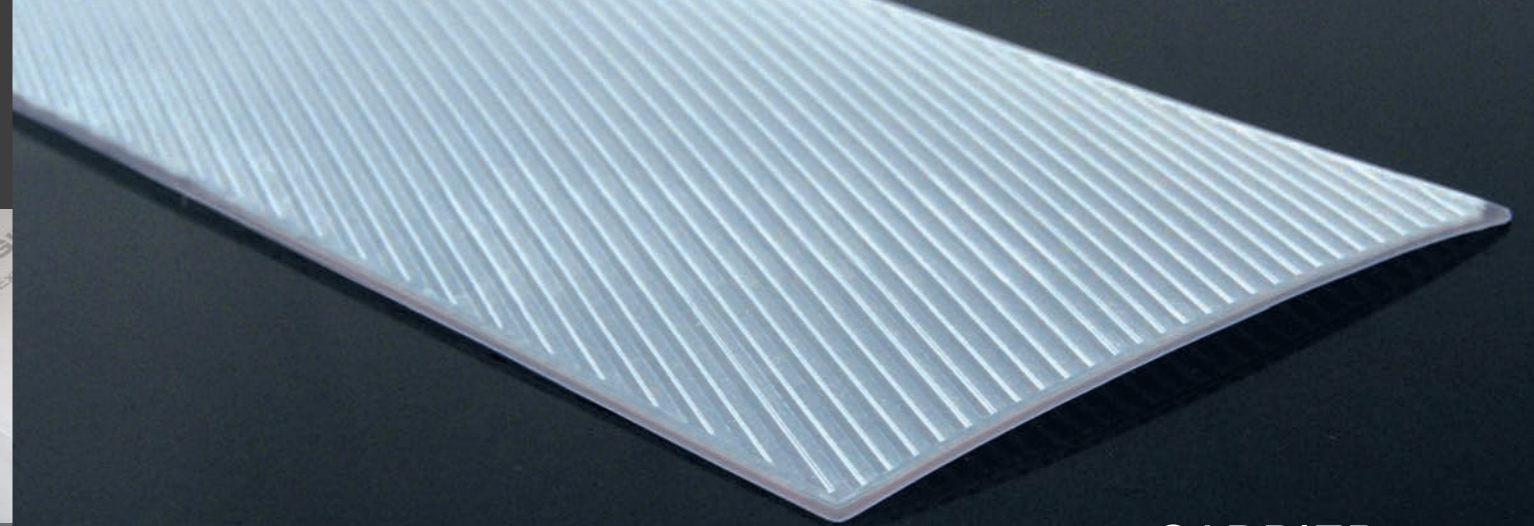
## For Skin Transplantation



■ Guides for Graft Carrier

■ Ratchet Handle for Easy Operation

■ Graft Thickness Adjustment (0-1,5 mm)



CARRIER

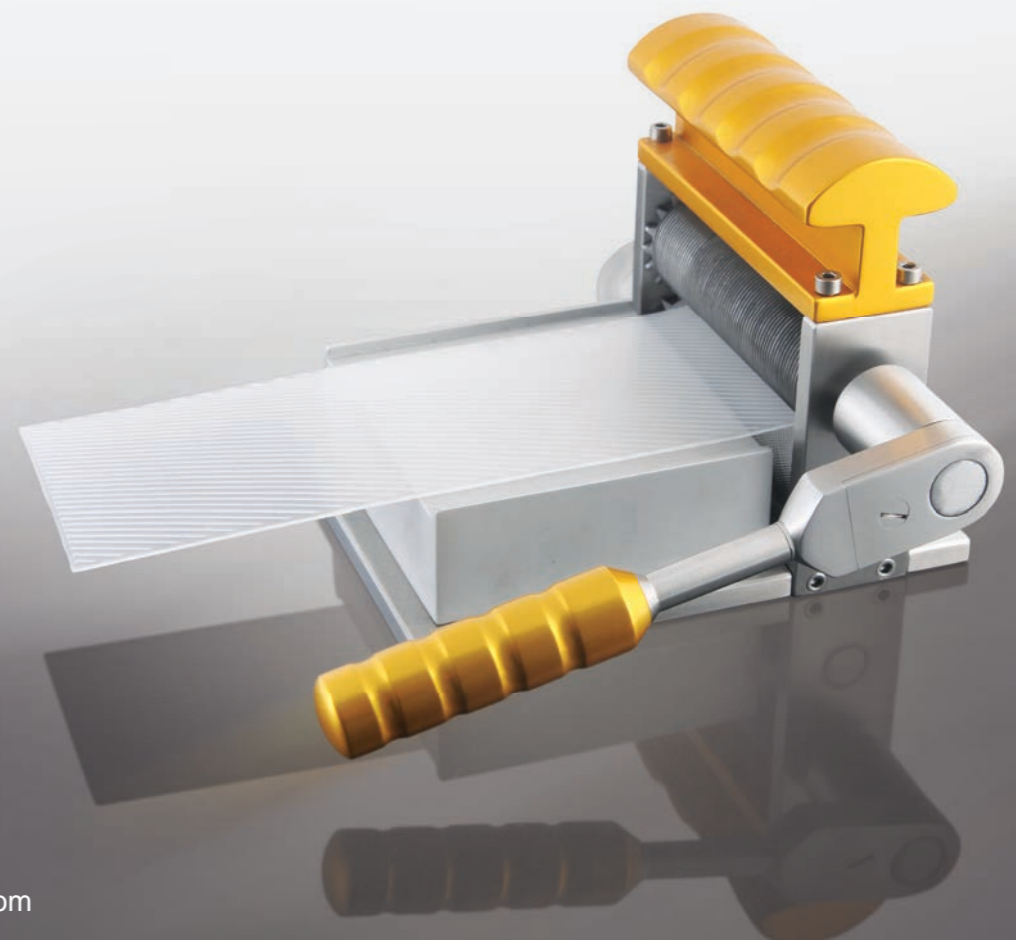
SKIN GRAFT MESHER



M11 - 500  
Skin Graft Mesher  
● 205 x 165 x 120 mm / 4000 g



M11 - 600 Skin graft carrier > 1,5:1 (Box of 20)  
M11 - 605 Skin graft carrier > 3:1 (Box of 20)



- Single cutter cuts skin graft into geometrical shaped mesh & enlarge skin surface.
- Graft expansion predetermined by graft carrying plates, eliminating need to change cutter during operation.
- Continuous feed design prevents graft carrying plate from being loaded incorrectly and allow multiple plates to be used without interruption.
- Graft thickness adjustment feature allow expansion on thin and thick grafts.
- Easy availability of replacement parts.